

MODEL 4T25-A TRANSFORMER -

Quick Connect Primaries

Model 4T25-A is a 4 watt, 25 volt transformer use with primary tap at 4 watts, and common primary tap use: .205 X .020 quick lugs. Secondary use: 6" long white wire with .205 quick disconnect female. The input (primary) impedance shall be 150 ohms +/- 10% at 1kHz when connected to the speaker. The output (secondary) impedance shall match the speakers impedance of approximately 8 ohms. The insertion loss: 2.2 dB max 100 - 600 Hz. Model 4T25-A shall be coated with varnish or wax to protect against moisture.

MODEL 4T70-A TRANSFORMER -

Teflon Wire, Primary and Secondary Wires

Model 4T70-A is a 4 watt, 70 volt transformer with primary taps at: common (black), 4 watt (brown), 2 watt (red), and 1 watt (orange). Primary termination: 12" long Teflon type E insulation and 1/4" strip and tin on ends. Secondary taps at: 7" long 22 ga Teflon type E (white) and 1/4" strip and tin on ends. Secondary impedance: 8 ohms. Mounting: horizontal frame: 2" centers. Core size: .5 X .75". Insertion loss: .8 dB. Model 4T70-A has an overall frequency response of 60Hz to 15kHz +/- 1dB.

MODEL 4T70-LUGS TRANSFORMER -

Quick Connect Primaries

Model 4T70-LUGS is a 4 watt, 70 volt transformer with .187 quick disconnect lugs. Secondary taps at: 4, 2, 1, 1/2, 1/4, with impedance of 8 ohms. "C": common is red. "8" is white.

MODEL 5T70-A TRANSFORMER -

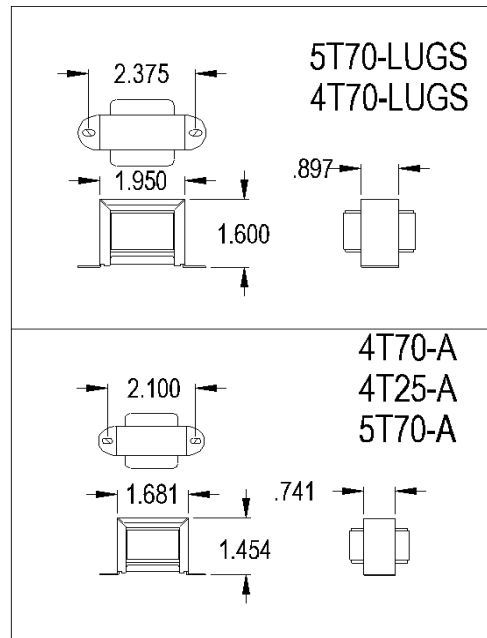
Quick Connect Primaries, Teflon Secondary Wire

Model 5T70-A transformer is a 5 watt, 70 volt transformer with primary taps and secondary taps. Primary taps at: common: 5 watt, 2.50 watt, 1.25 watt, .63 watt, and .31 watt. Primary termination: solder lugs. Core size: .5 X .75". Insertion loss: .8 dB. overall frequency response: 60Hz to 15kHz +/- 1dB. Secondary taps at: 7" long 22 ga Teflon type EE (white) 1/4" strip and tin on ends. Secondary impedance: 8 ohms. Mounting: horizontal frame: 2" centers.

MODEL 5T70-LUGS TRANSFORMER -

Quick Connect Primaries

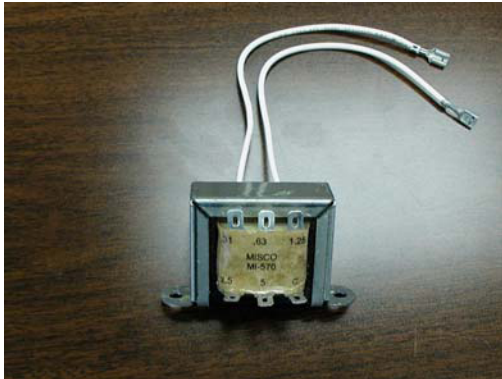
Model 5T70-LUGS is a 5 watt, 70 volt transformer with primary taps and secondary taps. Primary taps at: common: 5 watt, 2.5 watt, 1.25 watt, .62 watt, and .031 watt.. All primaries have .205 quick disconnect lugs (mates with amp 640913-1 or equal). Insertion loss. 1dB. Secondary taps at: 6" long white wires with .205 female quick connect attached.



| MODEL NUMBER | PRIMARY VOLTAGE | MAX POWER | PRIMARY TAPS | SECONDARY IMPEDANCE | INSERTION LOSS | CORE SIZE | FREQ RES |
|--------------|-----------------|-----------|------------------------|---------------------|----------------|-------------|-----------------------|
| 4T25-A | 25 | 4 WATTS | 4 | 8 OHMS | 2.2 dB | 5/8" x 1/2" | 100 - 10KHZ +/-1.5 dB |
| 4T70-A | 70 | 4 WATTS | 4, 2, 1, | 8 OHMS | .8 dB | 1/2" x 3/4" | 60 - 15KHZ +/- 1 dB |
| 4T70-LUGS | 70 | 4 WATTS | 4, 2, 1, .5, .25 | 8 OHMS | 1dB | 5/8" x 1/2" | 60 - 15KHZ +/- 1 dB |
| 5T70-A | 70 | 5 WATTS | 5, 2.5, 1.25, .63, .31 | 8 OHMS | .8 dB | 5/8" x 5/8" | 60 - 15KHZ +/- 1 dB |
| 5T70-LUGS | 70 | 5 WATTS | 5, 2.5, 1.25, .63, .31 | 8 OHMS | 1 dB | 1/2" x 3/4" | 100 - 10KHZ +/-1.5 dB |



5T70-LUGS 70 VOLT TRANSFORMER



TAPS AT:

COMMON

5 WATT

2.5 WATT

1.25 WATT

.062 WATT

.031 WATT

ALL PRIMARYS HAVE 0.205 QUICK DISCONNECT LUGS
(MATES WITH AMP 640913-1 OR EQUAL)

INSERTION LOSS: 1 Db

SECONDARY FREQUENCY RE SPONSE: 100Hz TO 10kHz

SECONDARY: 8 OHM, 6" LONG WH ITE WIRES WITH 0.205 FEMALE QUICK
CONNECT ATTACHED