

### MODEL 4T25-A TRANSFORMER -

#### Quick Connect Primaries

**Model 4T25-A** is a 4 watt, 25 volt transformer use with primary tap at 4 watts, and common primary tap use: .205 X .020 quick lugs. Secondary use: 6" long white wire with .205 quick disconnect female. The input (primary) impedance shall be 150 ohms +/- 10% at 1kHz when connected to the speaker. The output (secondary) impedance shall match the speakers impedance of approximately 8 ohms. The insertion loss: 2.2 dB max 100 - 600 Hz. Model 4T25-A shall be coated with varnish or wax to protect against moisture.

### MODEL 4T70-A TRANSFORMER -

#### Teflon Wire, Primary and Secondary Wires

**Model 4T70-A** is a 4 watt, 70 volt transformer with primary taps at: common (black), 4 watt (brown), 2 watt (red), and 1 watt (orange). Primary termination: 12" long Teflon type E insulation and 1/4" strip and tin on ends. Secondary taps at: 7" long 22 ga Teflon type E (white) and 1/4" strip and tin on ends. Secondary impedance: 8 ohms. Mounting: horizontal frame: 2" centers. Core size: .5 X .75". Insertion loss: .8 dB. Model 4T70-A has an overall frequency response of 60Hz to 15kHz +/- 1dB.

### MODEL 4T70-LUGS TRANSFORMER -

#### Quick Connect Primaries

**Model 4T70-LUGS** is a 4 watt, 70 volt transformer with .187 quick disconnect lugs. Secondary taps at: 4, 2, 1, 1/2, 1/4, with impedance of 8 ohms. "C": common is red. "8" is white.

### MODEL 5T70-A TRANSFORMER -

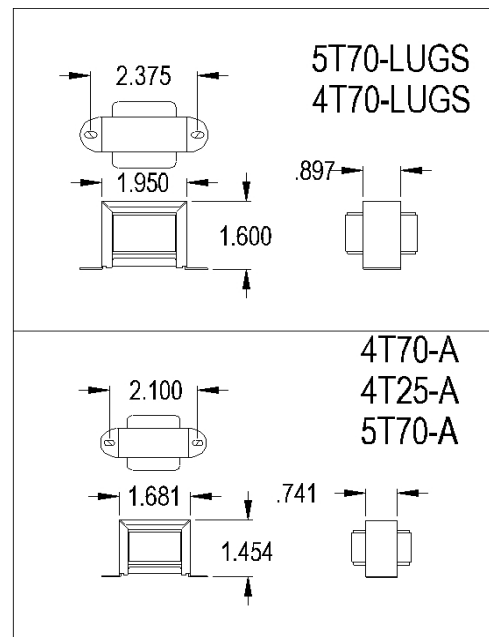
#### Quick Connect Primaries, Teflon Secondary Wire

**Model 5T70-A** transformer is a 5 watt, 70 volt transformer with primary taps and secondary taps. Primary taps at: common: 5 watt, 2.50 watt, 1.25 watt, .63 watt, and .31 watt. Primary termination: solder lugs. Core size: .5 X .75". Insertion loss: .8 dB. overall frequency response: 60Hz to 15kHz +/- 1dB. Secondary taps at: 7" long 22 ga Teflon type EE (white) 1/4" strip and tin on ends. Secondary impedance: 8 ohms. Mounting: horizontal frame: 2" centers.

### MODEL 5T70-LUGS TRANSFORMER -

#### Quick Connect Primaries

**Model 5T70-LUGS** is a 5 watt, 70 volt transformer with primary taps and secondary taps. Primary taps at: common: 5 watt, 2.5 watt, 1.25 watt, .62 watt, and .031 watt.. All primaries have .205 quick disconnect lugs (mates with amp 640913-1 or equal). Insertion loss. 1dB. Secondary taps at: 6" long white wires with .205 female quick connect attached.

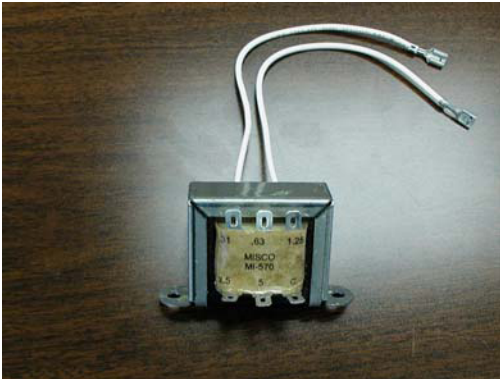


MODEL NUMBER	PRIMARY VOLTAGE	MAX POWER	PRIMARY TAPS	SECONDARY IMPEDANCE	INSERTION LOSS	CORE SIZE	FREQ RES
4T25-A	25	4 WATTS	4	8 OHMS	2.2 dB	5/8" x 1/2"	100 - 10KHZ +/-1.5 dB
4T70-A	70	4 WATTS	4, 2, 1,	8 OHMS	.8 dB	1/2" x 3/4"	60 - 15KHZ +/- 1 dB
4T70-LUGS	70	4 WATTS	4, 2, 1, .5, .25	8 OHMS	1dB	5/8" x 1/2"	60 - 15KHZ +/- 1 dB
5T70-A	70	5 WATTS	5, 2.5, 1.25, .63, .31	8 OHMS	.8 dB	5/8" x 5/8"	60 - 15KHZ +/- 1 dB
5T70-LUGS	70	5 WATTS	5, 2.5, 1.25, .63, .31	8 OHMS	1 dB	1/2" x 3/4"	100 - 10KHZ +/-1.5 dB

# MISCO

*For The Sound You Want*

## 5T70-LUGS 70 VOLT TRANSFORMER



TAPS AT:

COMMON

5 WATT

2.5 WATT

1.25 WATT

.062 WATT

.031 WATT

ALL PRIMARYS HAVE 0.205 QUICK DISCONNECT LUGS  
(MATES WITH AMP 640913-1 OR EQUAL)

INSERTION LOSS: 1 Db

SECONDARY FREQUENCY RE SPONSE: 100Hz TO 10kHz

SECONDARY: 8 OHM, 6" LONG WH ITE WIRES WITH 0.205 FEMALE QUICK  
CONNECT ATTACHED