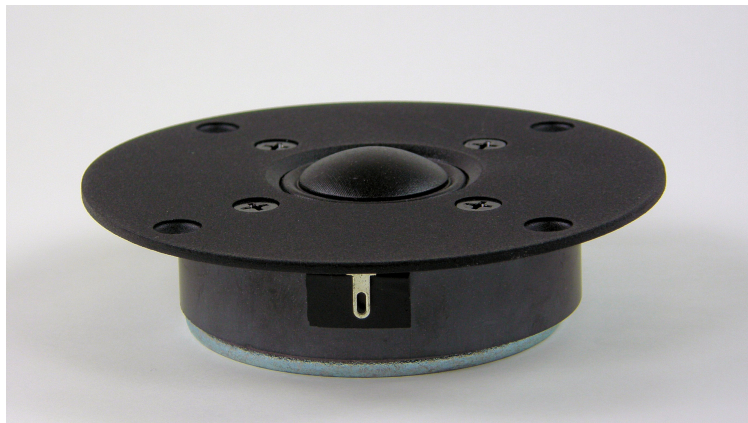


# Specification Sheet

Model # MTW025A0



# MISCO®

## Key Features:

- 4" (100 mm), 6 ohm
- Tweeter, 20 watts
- Ferrite magnet, silk dome;

## Product Specifications & Parameters

### Primary Specifications

Speakers Environment	Indoor
RoHS Compliant	No

### Technical Specifications

		Units of Measure
Nominal Basket Diameter	4.0	inch
	100.0	mm
Rated Impedance	6	ohms
Rated Power	20.0	Watts
Program Power	40	Watts
Frequency Range	1400 - 20000	Hz
Sensitivity (2.83 V input measured at 1 Meter)	88	dB SPL
Voice Coil Diameter	1.0 / 25.4	inch / mm
Magnet Weight	17.6 / 500	oz / gr
Transformer		

### Small Signal Parameters

		Units of Measure
Resonant Frequency (fo)	1400	Hz
D.C. Resistance (Re)	5.8	ohms
Mechanical Q (Qms)	2.3	
Electrical Q (Qes)	2.3	
Total Q (Qts)	1.1	
Compliance Equivalent Volume (Vas)		ltr
BL Product (BL)		T-M
Maximum Linear Excursion (Xmax)		mm
Surface Area of Cone (Sd)		cm <sup>2</sup>
Moving Mass (Mmd)		g

### Material Descriptions

Basket	Cast Aluminum
Terminal Size	0.205 X 0.02/.11 X .02
Magnet	Ferrite
Voice Coil Wire	Copper
Voice Coil Form	Aluminum
Cone	Black Silk
Cone Edge	Black Silk
Dust Cap	None

# Drawing

ID	Description	Measurements	Tolerance
OD	Outside Diameter	3.9 in.	+/- 0.040"
CD	Cutout Diameter	3.5 in.	+/- 0.030"
MG	Magnet Diameter	2.8 in.	+/- 0.050"
HD	Hole Diameter	0.16 in.	+/- 0.020"
MD	Mounting Diameter	3.4 in.	+/- 0.020"
ID	Internal Depth	0.9 in.	Maximum
FT	Flange Thickness	0.08 in.	+/- 0.050"
NW	Net Weight	501.0 gr.	

